

To comment on transportation issues at any time:

Visit our website at www.srpedd.org



Or visit [SRPEDD's Facebook Page](#)

Call: 508 824-1367

Dial 711 to use MassRelay

Fax: 508 823-1803

E-mail: lcabral@srpedd.org

The Regional Transportation Plan is a year-long project that will be completed in 2019. Visit our website and Facebook page to stay informed.

Please take our 5-minute survey to tell us what you think about transportation in your community and in the region.



www.surveymonkey.com/r/RTP2019

SRPEDD
88 Broadway
Taunton, MA 02780
508 824-1367 (tel.)
508 823-1803 (fax)
Dial 711 to Use MassRelay
www.srpedd.org

We are the Regional Planning Agency for 27 communities and staff to:

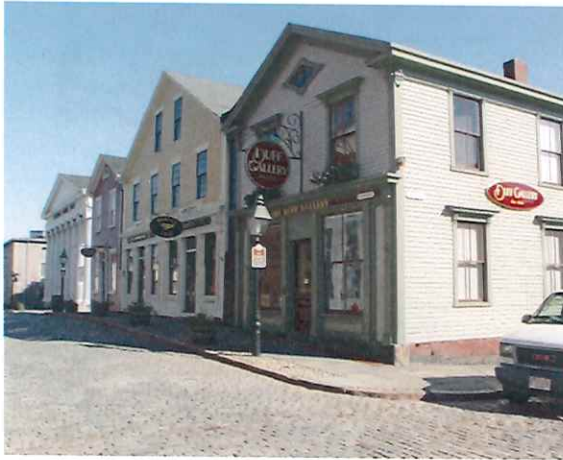
The Southeastern Massachusetts Metropolitan Planning Organization



The Regional Transportation Plan



Preserve



Existing Infrastructure

Historic Neighborhoods

Open Space / Right-to-Farm

Chapter 90 Funding for Local Roads

Current Transit Funding

Signal Operations & Timing

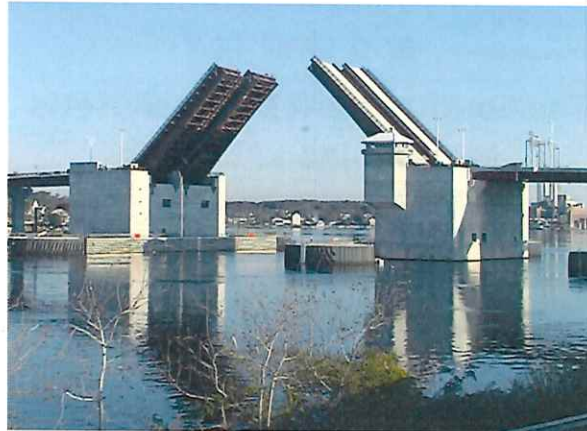
Pavement Markings & Signs Upkeep

Improve

Accessibility & Mobility Options for People & Freight

Expanded Regional, Local & Intercity Transit Service

Quality of Life



Multi-Modes of Travel

Energy Conservation

Bicycle & Pedestrian Accommodations

Increase Chapter 90 Funding for Local Roads

Move Forward

Expand Commuter Rail Service

Mitigate Climate Change & Stormwater Impacts

Expansion of Commercial Flights at New Bedford Regional Airport

Increase Sustainable Freight by Water & Rail

Data Driven Planning Decisions

Support Economic Development

