

# Routes 44 & 118 Intersection Redesign Rehoboth, MA

Board of Selectmen Meeting  
November 26, 2018

# PROJECT LOCATION OVERVIEW

Intersection of:

- Route 44  
(Winthrop Street)
- Route 118  
(Anawan Street)
- Route 118  
(Bay State Road)



# Why This Project is Needed

- Safety – High Crash Location
- Lacks Pedestrian and Bicycle Accommodations
- Aging Infrastructure

# Existing Intersection



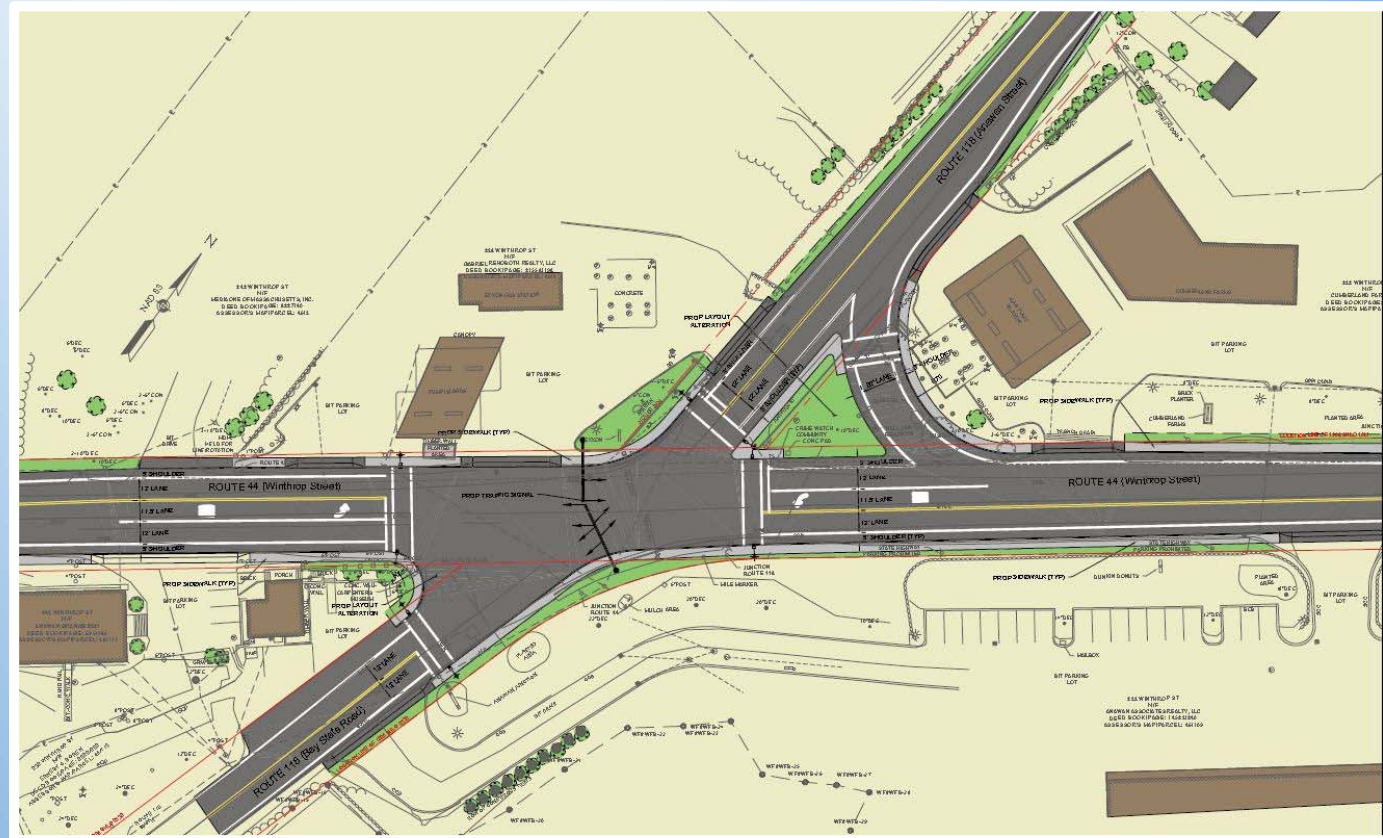
# Road Safety Audit

Conducted 4/25/18 – Identified Safety Issues:

- Intersection Skew
- Lane Configuration
- Signal Visibility
- Pedestrian and Bicycle Accommodations
- Curb Cuts and Parking
- Emergency Pre-Emption

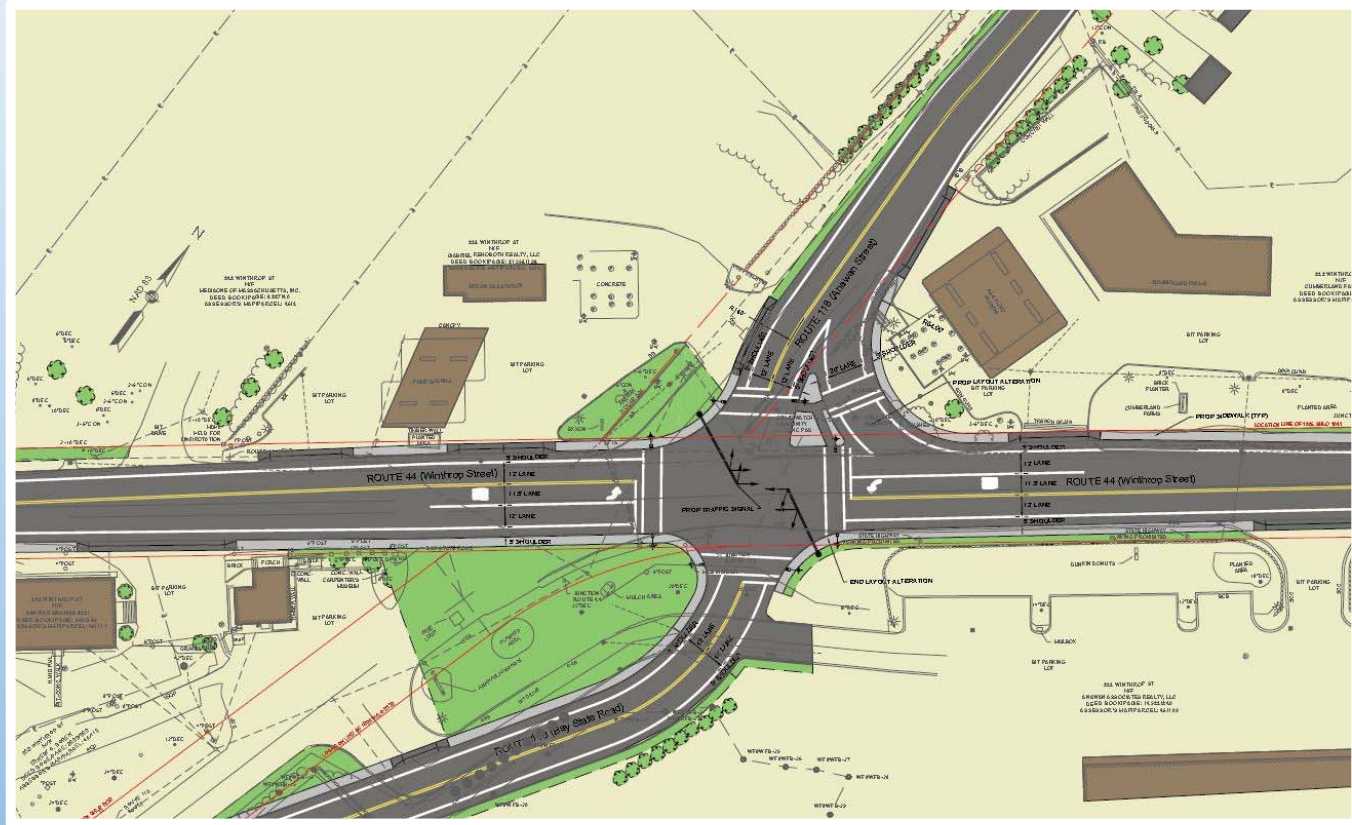
# Alternative 1 – Retain Existing Geometry

- Add Left Turn Lanes on Route 44
- Add Sidewalks and Crosswalks
- Wider Shoulders at Intersection
- New Signal Equipment
- Route 44 WB Right Turn Slip Lane



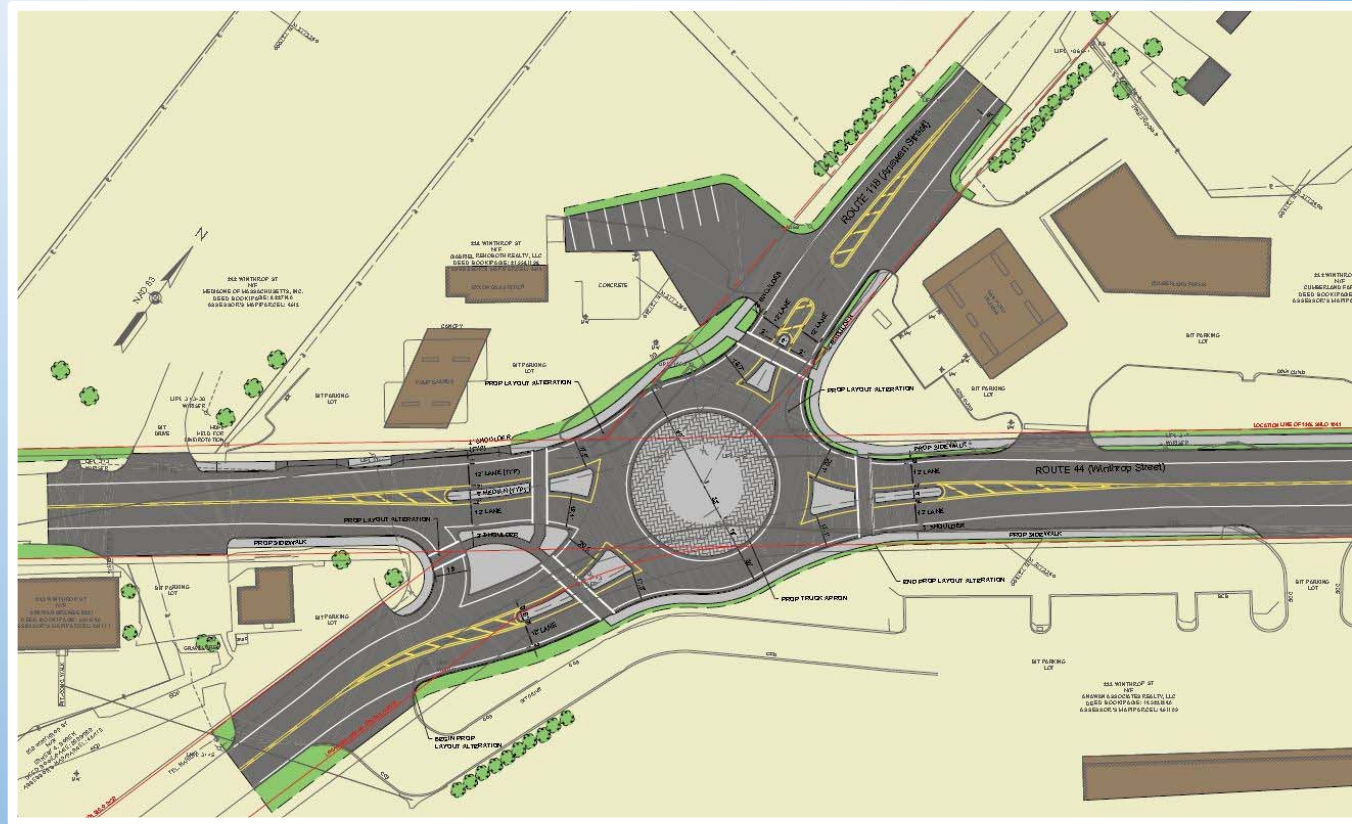
# Alternative 2 – Realign Approaches

- Improved Intersection Geometry
- Add Left Turn Lanes on Route 44
- Add Sidewalks and Crosswalks
- Wider Shoulders at Intersection
- New Signal Equipment
- Route 44 WB Right Turn Slip Lane



# Alternative 3 - Roundabout

- Replace Signal with Roundabout
- Add Sidewalks and Crosswalks
- Route 44 EB Right Turn Slip Lane





# Pros and Cons

Issue	Alternative 1 (Existing Geometry - Signal)	Alternative 2 (Realigned Geometry - Signal)	Alternative 3 (Roundabout)
Accommodate Pedestrians and Bicycles	YES	YES	YES
Address Skew	NO	YES	YES
Accommodate Large Vehicles (WB-67)	NO	YES	YES
Curb Cut Opening at Intersection	YES	NO	NO
Low Speeds	NO	NO	YES
ROW Impacts	LOW	HIGH	LOW
Wetland Impact	NO	YES	NO

# Roundabout = Preferred Option

## Benefits

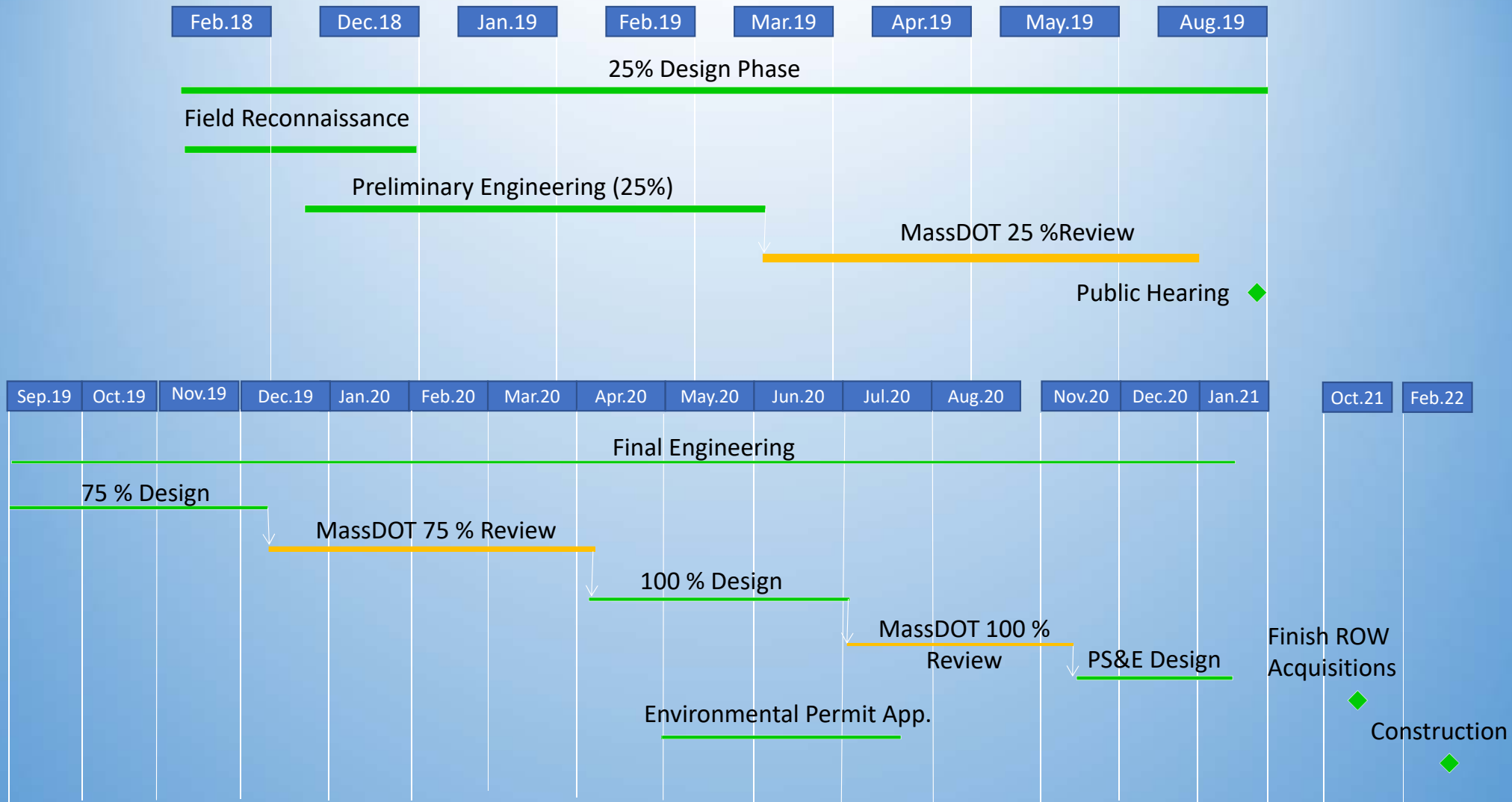
- Reduced Speeds – Improved Safety for All Users
- Reduce Conflict Points from 32 down to 8
- Improved Capacity/LOS
- Lower Future Maintenance and Operation Costs
- Can Accommodate all Vehicles up to WB-67



# Project Funding

- Transportation Improvement Program (TIP)
- Programmed in FFY 2022
- MassDOT Responsible for Design and Construction Costs

# Project Timeline



# Building Consensus on Solutions

## Address:

- Intersection Geometry
- Safety
- Bicycle & Pedestrian Enhancement

## Comply With:

- Right Of Way
- Environmental Regulations
- Design Criteria

## Satisfy Stakeholders:

- MassDOT
- Abutters
- Community at Large
- Public Works
- Conservation Commission
- Bicycle & Pedestrian Enthusiasts.

# Questions and Comments